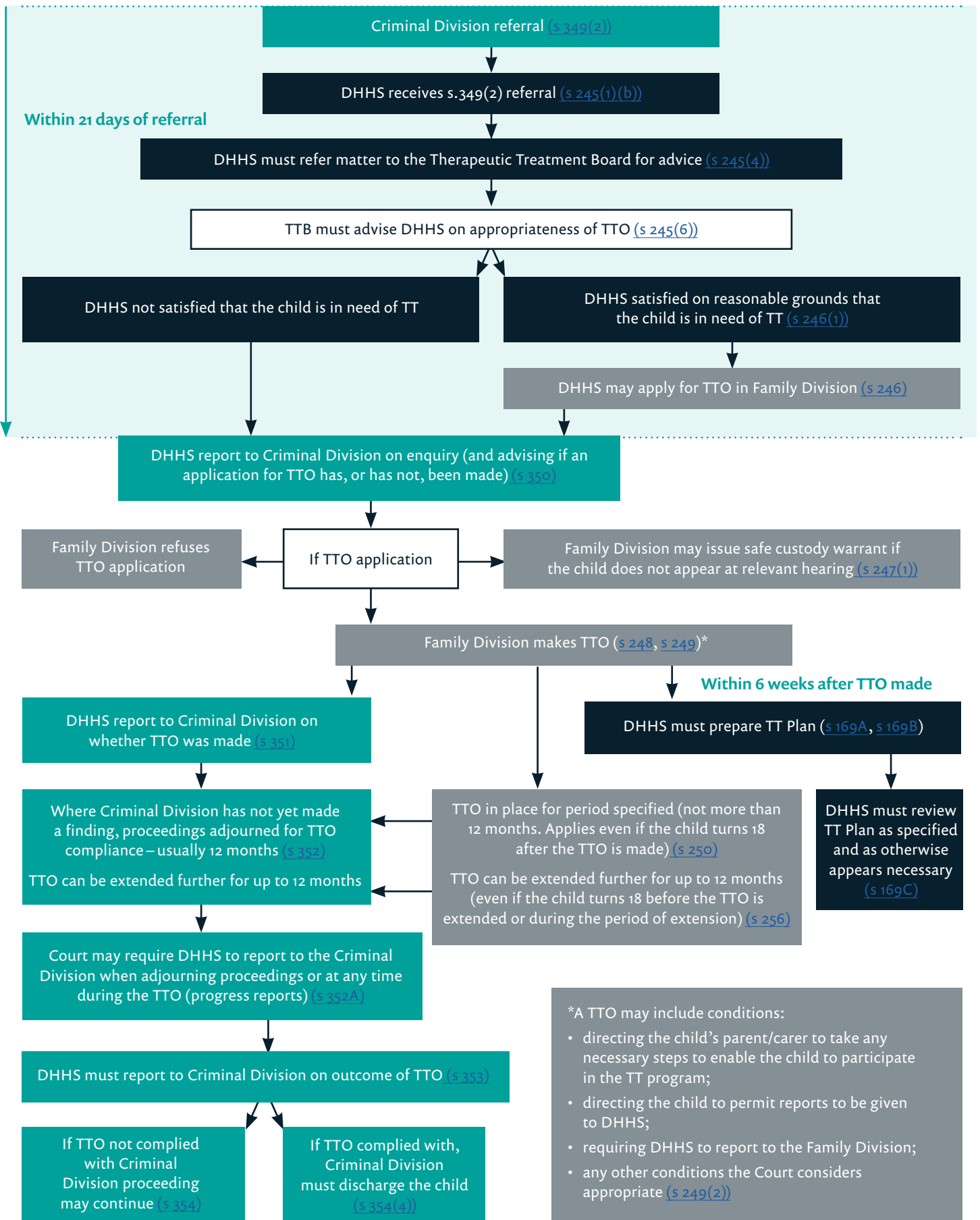


# Therapeutic Treatment Orders

## Pathway when the Children's Court (Criminal Division) makes a referral



\*A TTO may include conditions:

- directing the child's parent/carer to take any necessary steps to enable the child to participate in the TT program;
- directing the child to permit reports to be given to DHHS;
- requiring DHHS to report to the Family Division;
- any other conditions the Court considers appropriate (s 249(2))